

# Clarke®

## STRONG-ARM



### GARAGE JACK

MODEL NO: CTJ3000QLC

PART NO: 7623210

## OPERATION & MAINTENANCE INSTRUCTIONS

UK  
CA | CE

ORIGINAL INSTRUCTIONS

GC0224

---

## INTRODUCTION

---

Thank you for purchasing this CLARKE Garage Jack.

Before attempting to use this product, please read this manual thoroughly and follow the instructions carefully. In doing so you will ensure the safety of yourself and that of others around you, and you can look forward to your purchase giving you long and satisfactory service.

---

## SPECIFICATIONS

---

Part number	7623210
Dimensions (exc handle) L x W x H	630 x 340 x 220 mm
Max height with handle fitted	1300 mm
Height of saddle from floor (minimum)	133 mm
Height of saddle from floor (maximum)	465 mm
Lift range under rated load	330 - 465 mm
Weight	31.2 kg
Rated Load	3 tonne
Approx distance raised per stroke	44,3 mm
Number of full strokes to maximum height	7.5 strokes
Lowering speed under load	0.28 m/s
Pump oil capacity	220 ml
Oil grade	Hydraulic oil L-HM22

---

## SAFETY PRECAUTIONS

---

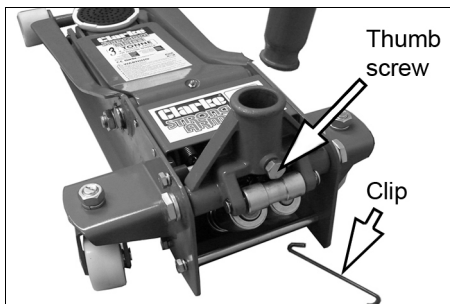
1. Read this instruction manual before use
2. Only trained persons should operate this lifting equipment
3. **ALWAYS** ensure that sufficient light is provided and that the work area is kept clear of unrelated items.
4. **ALWAYS** inspect the jack before use. Make sure that all parts are in good condition and operating smoothly and that no cracks or distortion is apparent. If in doubt **DO NOT** use. Have the damaged parts replaced or consult your CLARKE dealer.
5. The jack must be maintained and repaired by suitably qualified persons.
6. **DO NOT** make any modifications to this jack or adjust any valves
7. **DO NOT** use the jack if an oil leak is apparent. Consult your CLARKE dealer.
8. **DO NOT** use to lift people and ensure that no-one is in the vehicle during lifting.
9. **NEVER** exceed the rated load for the jack. Overloading can cause the jack to fail resulting in personal injury.
10. Make sure that the jack is on a hard level surface and there is no possibility of it slipping when under load.
11. Only use the jack on solid ground, preferably concrete. Avoid tarmac as the jack could sink in.
12. Make sure the load is taken by the full saddle and that the lifting point on the load is of sufficient strength to support the weight.
13. **ALWAYS** use axle stands to stabilise the load once lifted.
14. Consult the vehicle handbook to determine the correct lifting points.
15. Ensure the load is chocked and the handbrake applied before lifting.
16. **NEVER** work on or under a load unless it is fully and adequately supported.
17. **NEVER** rely upon the jack to hold the load in position.
18. **NEVER** push a load off the jack
19. Ensure that all personnel are well clear of a load being raised or lowered.
20. Take care not to trap fingers within the moving parts.
21. Use only as a lifting device, **DO NOT** use as a dolly to move a load.

## UNPACKING AND ASSEMBLY

1. Remove the retaining clip by pressing the handle yoke downwards and pulling the clip away.

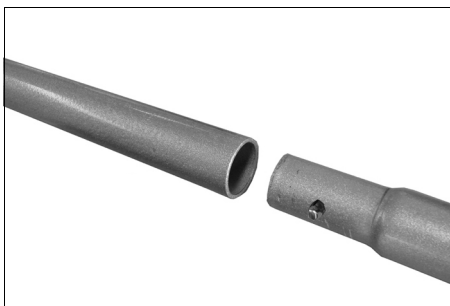
2. Loosen the thumb screw in the yoke until the lower handle can be inserted fully into the handle socket.

- The lower handle has a groove which should engage with the thumb screw once it is re-tightened.
- The socket in the handle will engage with the jack control valve at the base of the yoke.



3. Tighten the thumb screw to secure the lower handle to the jack.

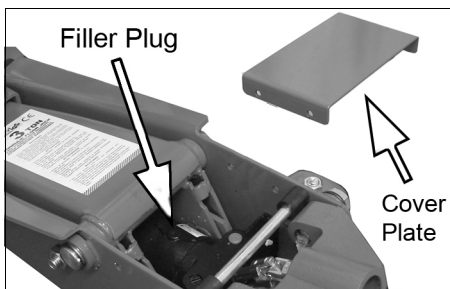
4. Add the upper handle by sliding it onto the lower handle until the spring loaded plunger clips in place.



## PURGING AIR FROM THE SYSTEM

If air bubbles become trapped inside the hydraulic system during shipping or transport, the efficiency of the jack will be reduced and the jack will feel spongy.

1. Insert the handle into the yoke and twist the control valve counter-clockwise, relieving the pressure inside the jack, then remove the cover plate.



2. Pump the handle several times to purge air from the system, while pressing down on the filler plug when the air is expelled.

3. Turn the control valve clockwise and test the jack. If efficiency is still low, check the oil level as described under Maintenance.

4. The jack is now ready to use.

---

## OPERATION

---

This jack incorporates a twin piston pump with a 'quick lift' facility. This provides the user with a rapid raising operation for the unloaded jack. When the jack encounters a load (the vehicle to be raised), its distance raised per stroke reduces to provide a gradual and controllable lifting operation.

Before use, inspect the jack for oil leaks or any other sign of damage. Should any be apparent, have the jack repaired by a qualified technician.



**WARNING: NEVER WORK ON THE VEHICLE WHEN SUPPORTED ONLY BY A JACK. THIS IS HIGHLY DANGEROUS. THE VEHICLE MUST BE SUPPORTED ON AXLE STANDS OR SUITABLE SUPPORTS, BENEATH THE CORRECT JACKING/ SUPPORT POINTS.**

---

1. Ensure the vehicle to be raised is stable and on firm level ground with the wheels chocked.
2. Position the jack so that the saddle is directly beneath the lifting point.
  - Consult the vehicle handbook to determine suitable lifting points.
3. Twist the handle clockwise to close the control valve.
4. Pump the handle to raise the saddle until it reaches the jacking point.
5. Make sure that the saddle is in full contact with the lifting point and that there is nothing that will prevent a clean lift. Keep all personnel at a safe distance before lifting the vehicle.
6. Position axle stands directly beneath suitable supporting points on the vehicle and very gently twist the handle anti-clockwise.
7. This will open the control valve to lower the load onto the stands.
  - Make sure that the axle stands are in good condition and that they can hold the load.
8. Ensure that the axle stands cannot move when supporting the load. Use suitable wheel chocks to stop the vehicle from moving. **AXLE STAND MUST BE ON A FIRM, LEVEL SURFACE.**

**NOTE:** The jack may move slightly during operation. It is important therefore, that the floor is clean and completely free from debris.

9. To stop it lowering at any point, turn the handle clockwise again. Always avoid a rapid descent by turning the handle slowly.
10. Carefully lower the vehicle onto the axle stand, checking constantly, preferably with an assistant, that the vehicles jacking point rests snugly and cleanly on the axle stand, and that the stand is stable before the weight is taken.

**NOTE:** Ensure this operation is carried out under complete control. DO NOT allow the load to drop suddenly as this could damage internal parts.

11. Completely remove the jack from under the vehicle.

---

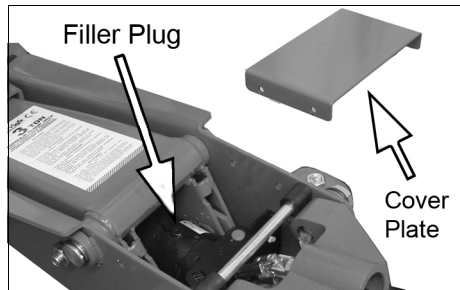
## MAINTENANCE

---

### CHECKING /MAINTAINING THE OIL LEVEL

If the jack has been stored for long periods, check for oil leaks before use. If necessary, check the oil level as follows:

1. Ensure the jack is fully lowered by turning the control valve fully anti-clockwise.
2. Remove the retaining screws and lift off the cover plate.
3. Remove the filler plug.
  - The oil should be almost level with the bottom of the oil filler hole.
  - Oil can be topped up using Clarke Hydraulic Oil (p/n 3050830 1 litre).
4. Purge any air from the system and replace the filler plug and cover plate.
5. Dispose of old/spilled oil appropriately and wipe up any spillage.



### GENERAL CARE

1. Periodically lubricate the hinges, front wheels & rear castors with light oil.
2. Store in a dry location.
3. In the event of damage or broken components, replacements are available from Clarke Parts & Service.

### ENVIRONMENTAL PROTECTION

One of the most damaging sources of environmental pollution is oil products. NEVER throw away used hydraulic oil with domestic refuse or flush it down a sink or drain. Collect any hydraulic oil in a leak proof container and take it to your local waste disposal site.

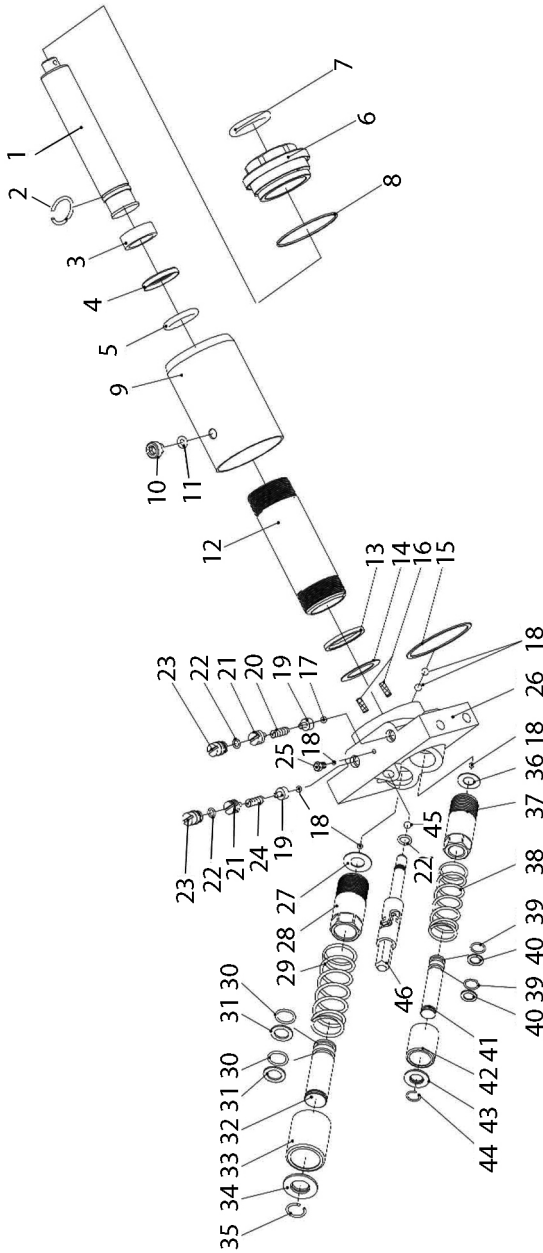
If disposing of this product or any damaged components, DO NOT dispose of with general waste. This product contains valuable raw materials and should be taken to your local civic amenity site for recycling of metal products.

## TROUBLESHOOTING

	CAUSE	SOLUTION
Jack will not lift the rated load	Low oil level	Check for leakage and top up if required.
	Release valve not closed	Turn the release knob fully clockwise
	Air in the hydraulic system	Purge the system as on page 4
Jack lowers when under load	Release valve not fully closed	Turn the release knob fully clockwise
	Air in the hydraulic system	Purge the system as on page 4
Pump feels Spongy	Low oil level	Check for leakage and top up if required.
	Air in the hydraulic system	Purge the system as on page 4
Handle raises or flies back under load	Air in the hydraulic system	Purge the system as on page 4
Jack will not lift full height	Low oil level	Check for leakage and top up if required.
	Air in the hydraulic system	Purge the system as on page 4
Jack will not lower completely	Return spring may be faulty.	Return to your Clarke dealer for repair

If any of these remedies fail to restore your jack, consult your Clarke dealer.

# COMPONENT PARTS - RAM ASSEMBLY



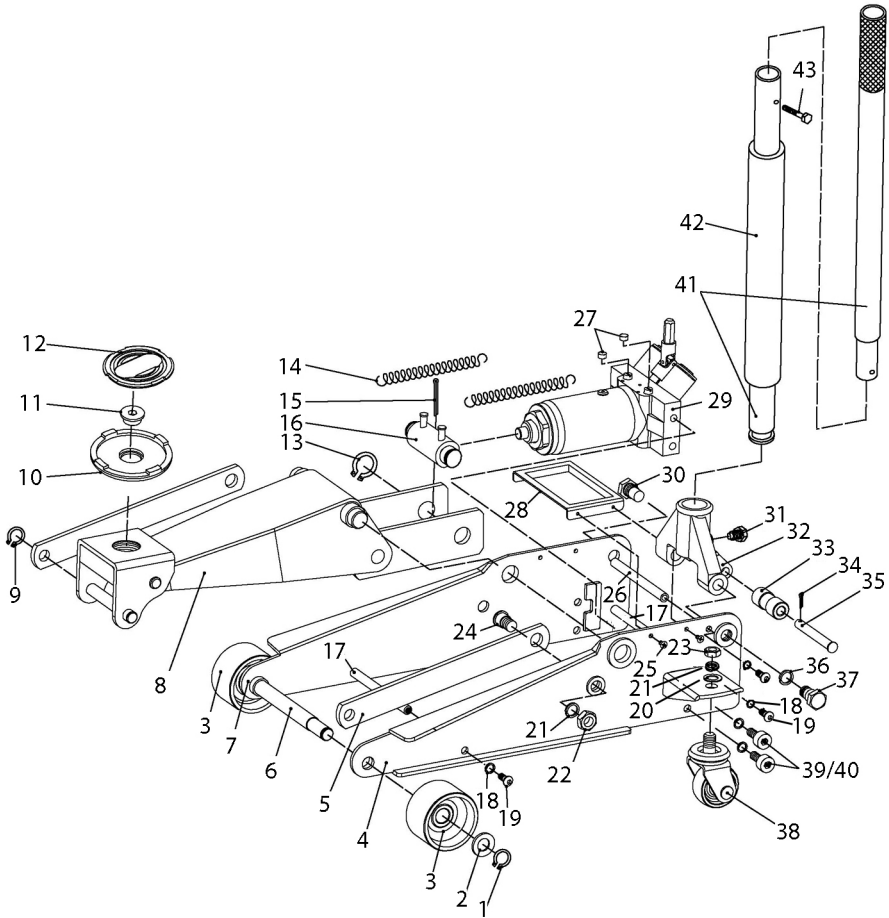


## COMPONENT PARTS - RAM ASSEMBLY

	Description
1	Piston
2	Circlip
3	Pressure ring
4	Bowl washer
5	O-ring (24.6x5.1)
6	Top cap
7	O-ring (29.6x3.5)
8	Nylon ring
9	Reservoir
10	Oil filler screw
11	O-ring (6.3mm)
12	Oil cylinder
13	Bottom cylinder nylon ring
14	Copper packing
15	Nylon ring
16	Strainer
17	Steel ball 4mm
18	Steel ball 5mm
19	Ball valve seat
20	Safety valve spring
21	Pressure adjusting screw
22	O-ring (8x1.8)
23	Safety valve screw

	Description
24	Safety valve spring (low)
25	Hex bolt M6 x 12
26	Base plate
27	Copper packing
28	Pump cylinder (large)
29	Tension spring (large)
30	O-ring
31	Split washer
32	Pump core (large)
33	Pump Inner (large)
34	Spring cover plate 22mm
35	Circlip 22mm
36	Copper packing
37	Pump cylinder (small)
38	Pump spring (small)
39	O-ring(10.2x 2.65)
40	Split ring
41	Pump core (small)
42	Pump liner (small)
43	Spring cover plate
44	Circlip
45	Steel ball 6mm
46	Discharge valve assembly

# COMPONENT PARTS - GENERAL ASSEMBLY



## COMPONENT PARTS - GENERAL ASSEMBLY

	Description
1	Circlip
2	Washer
3	Front wheel
4	Side plate (LH)
5	Side arm
6	Cotter Pin
7	Side plate (RH)
8	Lifting arm assembly
9	Circlip
10	Saddle
11	Pin for Saddle
12	Saddle pad
13	C-Clip 25 mm
14	Return spring
15	Split pin
16	Connector
17	Tie rod
18	Washer
19	Screw
20	Flat washer
21	Spring Washer
22	Nut

	Description
23	Nut
24	Bolt
25	Screw
26	Rear tie bar
27	Oil plug
28	Cover plate
29	Hydraulic ram assembly
30	Hinge nut
31	Handle locking bolt
32	Yoke
33	Hinge bush
34	Pin
35	Hinge rod
36	Spring washer
37	Pivot bolt
38	Rear Castor Assembly
39	Washer
40	Socket headed bolt
41	Handle Assembly
42	Handle sleeve
43	Handle bolt
44	Universal Joint Assembly

# DECLARATION OF CONFORMITY - UKCA

**UK  
CA**

**Clarke<sup>®</sup>**  
**INTERNATIONAL**

Hennall Street, Epping, Essex, CM16 4LG

## DECLARATION OF CONFORMITY

**This is an important document and should be retained.**

**We hereby declare that this product(s) complies with the following legislation:**

*The Supply of Machinery (Safety) Regulations 2008*

**The following standards have been applied to the product(s):**

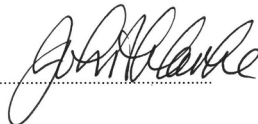
*EN 1494:2000+A1:2008*

The technical documentation required to demonstrate that the product(s) meet(s) the requirement(s) of the aforementioned legislation has been compiled and is available for inspection by the relevant enforcement authorities.

**The UKCA mark was first applied in: 2024**

**Product Description:** Trolley Jack  
**Model Number(s):** CTJ3000QLC  
**Serial/Batch Number:** Refer to product/packaging label  
**Date of Issue:** 17/01/2024

**Signed:**



**J.A Clarke**

**Director**

# DECLARATION OF CONFORMITY - CE



**Clarke**<sup>®</sup>  
**INTERNATIONAL**

Fitzwilliam Hall, Fitzwilliam Place, Dublin 2

## DECLARATION OF CONFORMITY

**This is an important document and should be retained.**

**We hereby declare that this product(s) complies with the following legislation:**

2006/42/EC                      *Machinery Directive*

**The following standards have been applied to the product(s):**

*EN 1494:2000+A1:2008*

The technical documentation required to demonstrate that the product(s) meet(s) the requirement(s) of the aforementioned legislation has been compiled and is available for inspection by the relevant enforcement authorities.

**The CE mark was first applied in: 2024**

**Product Description:**                      Trolley Jack  
**Model Number(s):**                          CTJ3000QLC  
**Serial/Batch Number:**                      Refer to product/packaging label  
**Date of Issue:**                                17/01/2024

**Signed:**

**J.A Clarke**

**Director**

---

## **GUARANTEE**

---

This product is guaranteed against faulty manufacture for a period of 12 months from the date of purchase. Please keep your receipt which will be required as proof of purchase.

This guarantee is invalid if the product is found to have been abused or tampered with in any way, or not used for the purpose for which it was intended.

Faulty goods should be returned to their place of purchase, no product can be returned to us without prior permission.

This guarantee does not effect your statutory rights.

## USEFUL ITEMS FROM THE CLARKE RANGE

### Axle Stands



Built for tough daily use in automotive and industrial workshops. Supplied in pairs

### Impact Wrenches



A range for garage/workshop use including mains or cordless and also supplied complete with impact sockets

### Engineering Drill Presses



Available for the hobbyist or professional. Ideal for fast, accurate drilling of metal and plastic. Choose from bench or floor mounted.

### Bench Grinders



DIY, professional & heavy duty bench grinders, ideal for grinding garden and workshop tools and general metalworking

A SELECTION FROM THE VAST RANGE OF

**Clarke**®

QUALITY PRODUCTS



**AIR COMPRESSORS**

From DIY to industrial, Plus air tools, spray guns and accessories.

**GENERATORS**

Prime duty or emergency standby for business, home and leisure.

**POWER WASHERS**

Hot and cold, electric and engine driven - we have what you need

**WELDERS**

Mig, Arc, Tig and Spot. From DIY to auto/industrial.

**METALWORKING**

Drills, grinders and saws for DIY and professional use.

**WOODWORKING**

Saws, sanders, lathes, mortisers and dust extraction.

**HYDRAULICS**

Cranes, body repair kits, transmission jacks for all types of workshop use.

**WATER PUMPS**

Submersible, electric and engine driven for DIY, agriculture and industry.

**POWERTOOLS**

Angle grinders, cordless drill sets, saws and sanders.

**STARTERS/CHARGERS**

All sizes for car and commercial use.

**PARTS & SERVICE:**  
**0208 988 7400**

**Parts Enquiries**  
[Parts@clarkeinternational.com](mailto:Parts@clarkeinternational.com)

**Servicing & Technical Enquiries**  
[Service@clarkeinternational.com](mailto:Service@clarkeinternational.com)

SALES: UK 01992 565333 or Export 00 44 (0)1992 565335

**Clarke**® INTERNATIONAL Hemnall Street, Epping, Essex CM16 4LG  
[www.clarkeinternational.com](http://www.clarkeinternational.com)